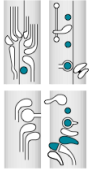


Beginning Bassoon Exercises

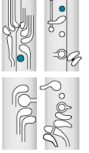
Building up to F Major

1. Sit with good posture, sitting tall and relaxed.
2. Play with the best sound you possibly can with strong, fast air.
3. Keep your arms, shoulders and fingers relaxed.
4. Your embouchure has equal pressure around the reed.

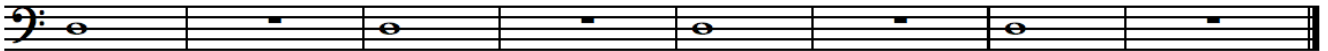
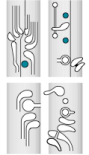
F



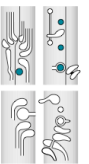
E



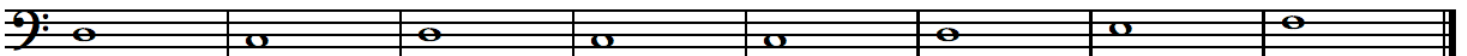
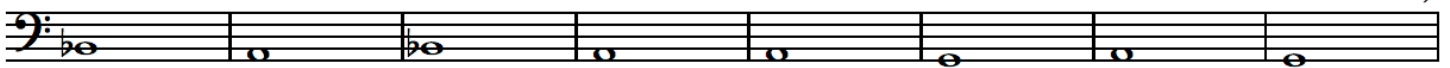
D



C



“Stepping Down”



B Flat

Hand diagrams showing the fingering for the B Flat chord in the bass clef. The left hand diagram shows the thumb on the 1st string (F) and the 2nd, 3rd, and 4th fingers on the 2nd, 3rd, and 4th strings (Bb, D, F). The right hand diagram shows the thumb on the 1st string (F) and the 2nd, 3rd, and 4th fingers on the 2nd, 3rd, and 4th strings (Bb, D, F).

Musical notation for the B Flat chord in the bass clef, consisting of a whole note chord with notes F, Bb, D, and F.

A

Hand diagrams showing the fingering for the A chord in the bass clef. The left hand diagram shows the thumb on the 1st string (A) and the 2nd, 3rd, and 4th fingers on the 2nd, 3rd, and 4th strings (A, C, E). The right hand diagram shows the thumb on the 1st string (A) and the 2nd, 3rd, and 4th fingers on the 2nd, 3rd, and 4th strings (A, C, E).

Musical notation for the A chord in the bass clef, consisting of a whole note chord with notes A, C, and E.

G

Hand diagrams showing the fingering for the G chord in the bass clef. The left hand diagram shows the thumb on the 1st string (G) and the 2nd, 3rd, and 4th fingers on the 2nd, 3rd, and 4th strings (G, B, D). The right hand diagram shows the thumb on the 1st string (G) and the 2nd, 3rd, and 4th fingers on the 2nd, 3rd, and 4th strings (G, B, D).

Musical notation for the G chord in the bass clef, consisting of a whole note chord with notes G, B, and D.

F

Hand diagrams showing the fingering for the F chord in the bass clef. The left hand diagram shows the thumb on the 1st string (F) and the 2nd, 3rd, and 4th fingers on the 2nd, 3rd, and 4th strings (F, A, C). The right hand diagram shows the thumb on the 1st string (F) and the 2nd, 3rd, and 4th fingers on the 2nd, 3rd, and 4th strings (F, A, C).

Musical notation for the F chord in the bass clef, consisting of a whole note chord with notes F, A, and C.

“Climbing Down”

Musical notation for the “Climbing Down” exercise in the bass clef. It consists of two staves of whole notes descending from G4 to F2. The first staff contains notes G, F, E, D, C, B, A, G. The second staff contains notes F, E, D, C, B, A, G, F.

“F Major Scale in Whole Notes”

Musical notation for the “F Major Scale in Whole Notes” exercise in the bass clef. It consists of two staves of whole notes. The first staff contains notes F, G, A, Bb, C, D, E, F. The second staff contains notes E, D, C, Bb, A, G, F, E.

“F Major Scale and Arpeggio”

Musical notation for the “F Major Scale and Arpeggio” exercise in the bass clef. It consists of a single staff of notes. The first half is the F major scale in whole notes: F, G, A, Bb, C, D, E, F. The second half is the F major arpeggio in whole notes: F, A, C, F.